



iQ Bristol, Marlborough Street, Bristol

Taking student living to new heights

iQ Bristol, Marlborough Street: Project summary

Client iQ Student Accommodation	Sector Residential apartments	Main Contractor Watkin Jones Group	Architect The Design Buro	Engineer 3E Consult	Project Value £2.6 million
Location Bristol					

11

storeys

17

weeks frame erection

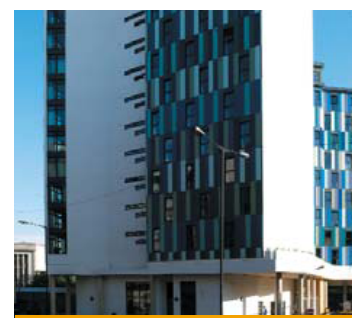
217

studio flats

361

bed spaces

iQ Bristol offers state-of-the-art private student accommodation to those studying in Bristol. It offers an exceptional city-centre location, a choice of apartment types, social hubs and on-site facilities including a laundry and a building management office.



The building contains 361 bed spaces in 36 clusters, including 217 studio flats. With 11 floors of light gauge frame sitting upon a first floor podium, Sigmat believes this is currently the UK's tallest completed light gauge steel frame building. The Sigmat team completed the multi-level scheme in just 17 weeks.

Resident students at iQ Bristol regularly enjoy the development's modern amenities, in which they can relax and unwind with friends and fellow students. It is said that the scheme offers a 'brilliant social atmosphere'.

The expertise of Sigmat in delivering an 11-storey light gauge steel solution was a key component in the success of this landmark project. We were delighted by the practical and time-saving advantages of using a light gauge frame.

Andy McDonough, Deputy Managing Director (Student Accommodation) and Commercial Director, Watkin Jones Group

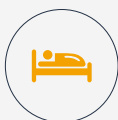
Sigmat 4 step solution



Sectors



RESIDENTIAL



STUDENT
ACCOMMODATION



HOTEL



RETIREMENT
LIVING / CARE



EDUCATION



MIXED USE

Find out how Sigmat can help you and your business

Call: 01756 701 522

Email: info@sigmat.com

Birkbecks, Water Street, Skipton, North Yorkshire BD23 1PB

sigmat 
building the future offsite