

WEYMOUTH TOWNHOUSES



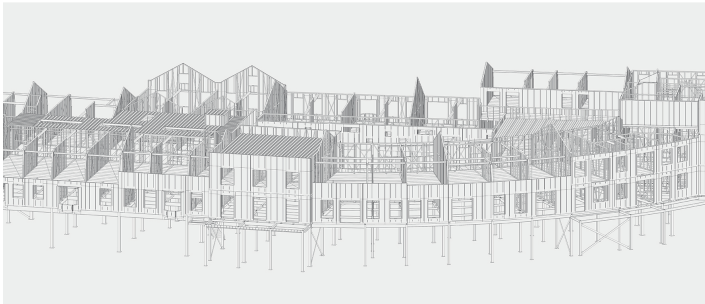
WEYMOUTH TOWNHOUSES: PROJECT SUMMARY

CLIENT	LOCATION	PROJECT VALUE	MAIN CONTRACTOR	TIMELINE
McCarthy & Stone	Weymouth	£12M	Graham Garner & Partners	14 weeks



Townhouse

The Harbour Lights project is an imaginative 3-storey Retirement Living development on the seafront at Weymouth in Dorset. McCarthy & Stone's careful consideration of the façades facing Weymouth Marina preserved the distinctive character of the local area.



Sigmat helped the main contractor McCarthy & Stone to design and build a new superstructure to house retired over 60's in a stunning location which overlooks Weymouth Marina. We installed a hot rolled steel podium to form under-croft parking as well as communal areas. This dovetailed perfectly with the 3-storey Sigmat light gauge steel frame and the Sigmat Mansard roof.